

Priority Route Maps

Mackay Isaac Whitsunday

Addendum to Principal Cycle Network Plan

► 2021



Contents

1	Introduction	3
2	Priority Route Maps	3
	<i>Whitsunday Regional Council</i>	
	<i>Bowen (Map 1)</i>	4
	<i>Airlie Beach (Map 2)</i>	5
	<i>Proserpine (Map 3)</i>	6
	<i>Collinsville (Map 4)</i>	7
	<i>Mackay Regional Council</i>	
	<i>Mackay North (Map 5)</i>	8
	<i>Mackay (Map 6)</i>	9
	<i>Mackay South (Map 7)</i>	10
	<i>Walkerston (Map 8)</i>	11
	<i>Marian/Mirani (Map 9)</i>	12
	<i>Sarina (Map 10)</i>	13
	<i>Isaac Regional Council</i>	
	<i>Clermont (Map 11)</i>	14
	<i>Dysart (Map 12)</i>	15
	<i>Middlemount (Map 13)</i>	16
	<i>Moranbah (Map 14)</i>	17



Translating and interpreting assistance: The Queensland Government is committed to providing accessible services to Queenslanders from all cultural and linguistic backgrounds. If you have difficulty understanding this publication and need a translator, please call the Translating and Interpreting Service (TIS National) on 13 14 50 and ask them to telephone the Queensland Department of Transport and Main Roads on 13 74 68.



Copyright: This publication is protected by the Copyright Act 1968. © State of Queensland, 2021.

License: The material in this work is licensed by the Department of Transport and Main Roads under a Creative Commons Attribution 4.0 International licence (CC BY 4.0), with the exception of:

- the Queensland Coat of Arms
- this department's logo
- any third party material, and
- any material protected by a trademark.

More information on the CC BY licence is set out as follows:

- Creative Commons website–
www.creativecommons.org
- Attribution 4.0 international (CC BY 4.0)–
<https://creativecommons.org/licenses/by/4.0/>

Attribution: The CC BY licence is a standard form licence agreement that allows you to copy and redistribute the material in any medium or format, as well as remix, transform, and build upon the material, on the condition that you provide a link to the licence, you indicate if changes were made, and you attribute the material as follows:

© State of Queensland (Department of Transport and Main Roads), *Priority Route Maps, Mackay Isaac Whitsunday, Addendum to Principle Cycle Network Plan, 2021*, is licensed under CC BY 4.0.

Enquiries about the use of any material in this publication can be sent to the department at: copyright@tmr.qov.au.

Disclaimer: While every care has been taken in preparing this publication, to the extent permitted by law, the State of Queensland accepts no responsibility and disclaims all liability (including without limitation, liability in negligence) for all expenses, losses (including direct and indirect loss), damages and costs incurred as a result of decisions or actions taken as a result of any data, information, statement or advice, expressed or implied, contained within. To the best of our knowledge, the content was correct at the time of publishing.

1 Introduction

The Priority Route Maps are an addendum to the *Mackay Isaac Whitsunday Principal Cycle Network Plan*. The plan shows the core routes needed to get more people cycling, more often. Routes shown are indicative. The plan is intended to support, guide and inform the planning, design and construction of the transport network. Priority Route Maps identify the delivery priority state and local governments have assigned to principal routes in each local government area.

1.1 Role of Priority Route Maps

The Priority Route Maps guide state and local government investment to deliver the principal cycle network.

The Priority Route Maps assist agencies to identify and use a range of mechanisms to deliver the principal cycle network such as state and local government capital works programs, road resealing and other maintenance programs. The maps also guide assessment of Queensland Government Cycle Network Local Government Grants program applications.

The maps do not impact implementation of the Department of Transport and Main Roads' *Cycling Infrastructure Policy*. Department-funded projects on principal routes must explicitly provide cycling infrastructure within the project's scope, regardless of delivery priority reflected on the maps.

1.2 Update of Priority Route Maps

In 2017, the Priority Route Maps were published, to be updated every two years. In 2019, the department collaborated with local government to update the maps to reflect current delivery priorities. Principal routes were identified as:

- Priority A (focus of delivery in the next 10 years)
- Priority B (for delivery in the next 10 to 15 years)
- Priority C (for delivery in the next 15 to 20 years)
- Priority D (for delivery in the next 20 years or more)
- Existing (as reported by local road authority).

Routes identified as Priority A, B, C, or D may have existing cycling infrastructure on them. The priority reflects that the road authority may intend to undertake further planning, design and/or construction on the route such as an upgrade of the existing infrastructure or filling missing links

Routes reported by the road authority as Existing have not been verified on ground. The existing cycling infrastructure has not been reported or confirmed. The Priority Route Maps should therefore not be used for navigation or trip planning purposes.

The priority given to each route was informed by consultation with local government and the Department of Transport and Main Roads regional officers. Prioritisation considered safety, demand, land use and network connectivity data, along with planning, feasibility and opportunities. Consultation with cycling and other stakeholders will occur as part of future detailed investigations of the principal routes.

1.3 Endorsement and review

The Priority Route Maps have been endorsed by all local governments covered and by the Department of Transport and Main Roads. The maps will be regularly reviewed to track delivery and respond to changing circumstances such as changes in demand, priority and funding availability.

2 Priority Route Maps

This section presents the Priority Route Maps by local government area.

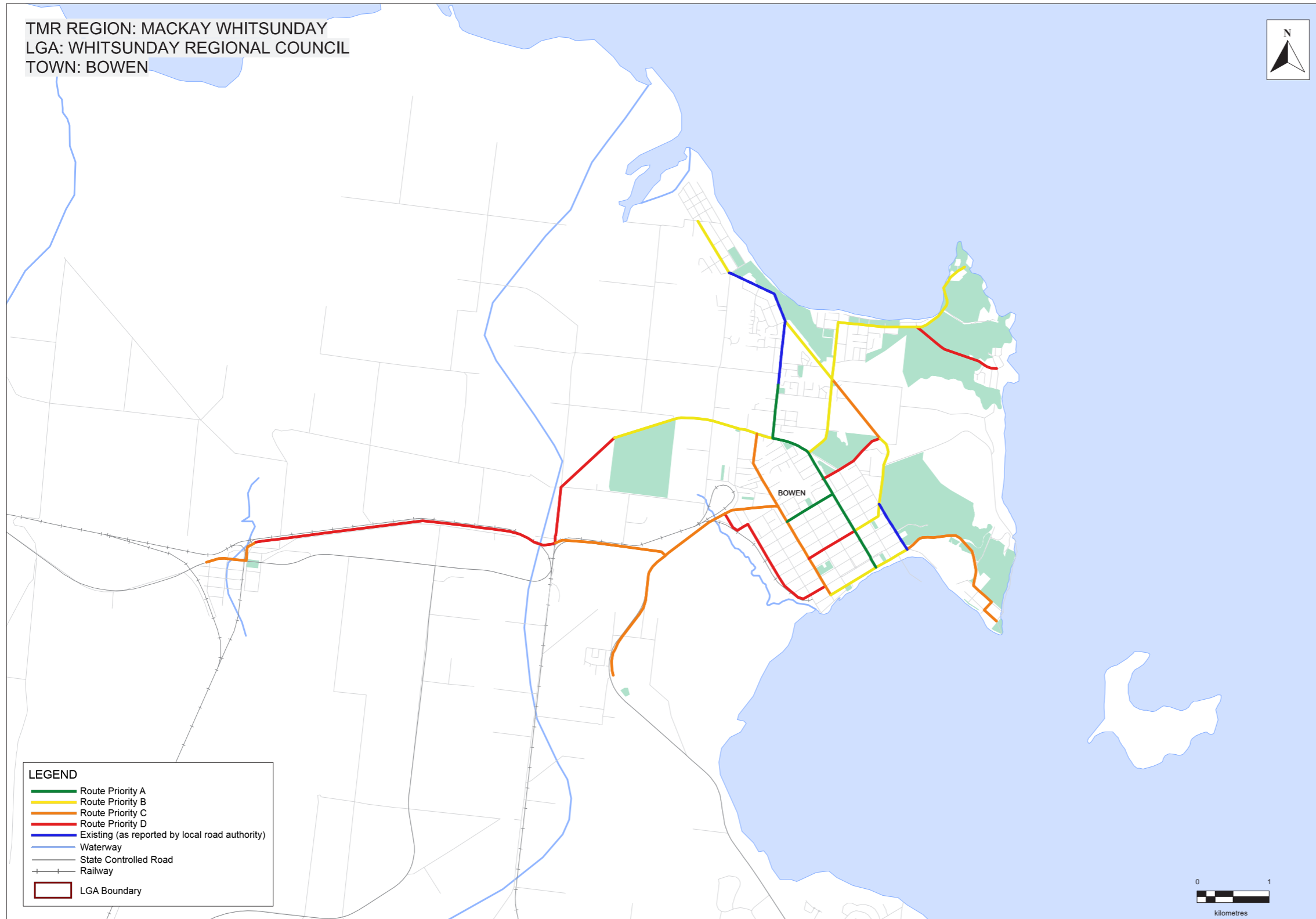
Whitsunday Regional Council – Bowen

Priority Route Map 1

Mackay Isaac Whitsunday Principal Cycle Network

The routes shown are indicative and exist to guide further planning that will determine the precise routes and design of cycle facilities.

Disclaimer: While every care is taken to ensure the accuracy of this data, Transport and Main Roads and/or the State Government makes no representation or warranties about its accuracy, reliability, completeness or suitability for any particular purpose and disclaims all responsibility and all liability (including without limitation, liability in negligence) for all expenses, losses, damages (including indirect or consequential damage) and costs which you might incur as a result of the data being inaccurate or incomplete in any way and for any reason.



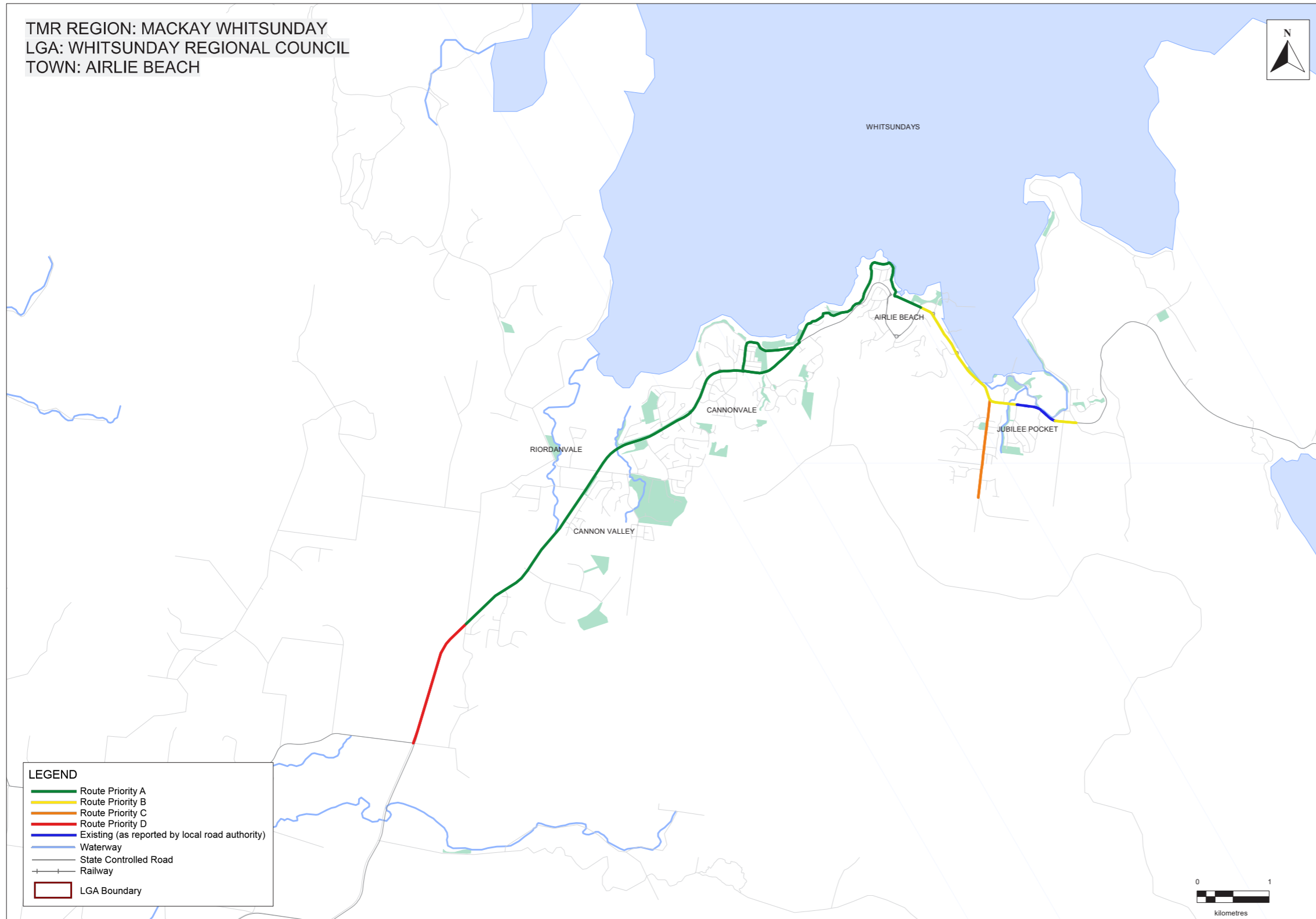
Whitsunday Regional Council – Airlie Beach

Priority Route Map 2

Mackay Isaac Whitsunday Principal Cycle Network

The routes shown are indicative and exist to guide further planning that will determine the precise routes and design of cycle facilities.

Disclaimer: While every care is taken to ensure the accuracy of this data, Transport and Main Roads and/or the State Government makes no representation or warranties about its accuracy, reliability, completeness or suitability for any particular purpose and disclaims all responsibility and all liability (including without limitation, liability in negligence) for all expenses, losses, damages (including indirect or consequential damage) and costs which you might incur as a result of the data being inaccurate or incomplete in any way and for any reason.



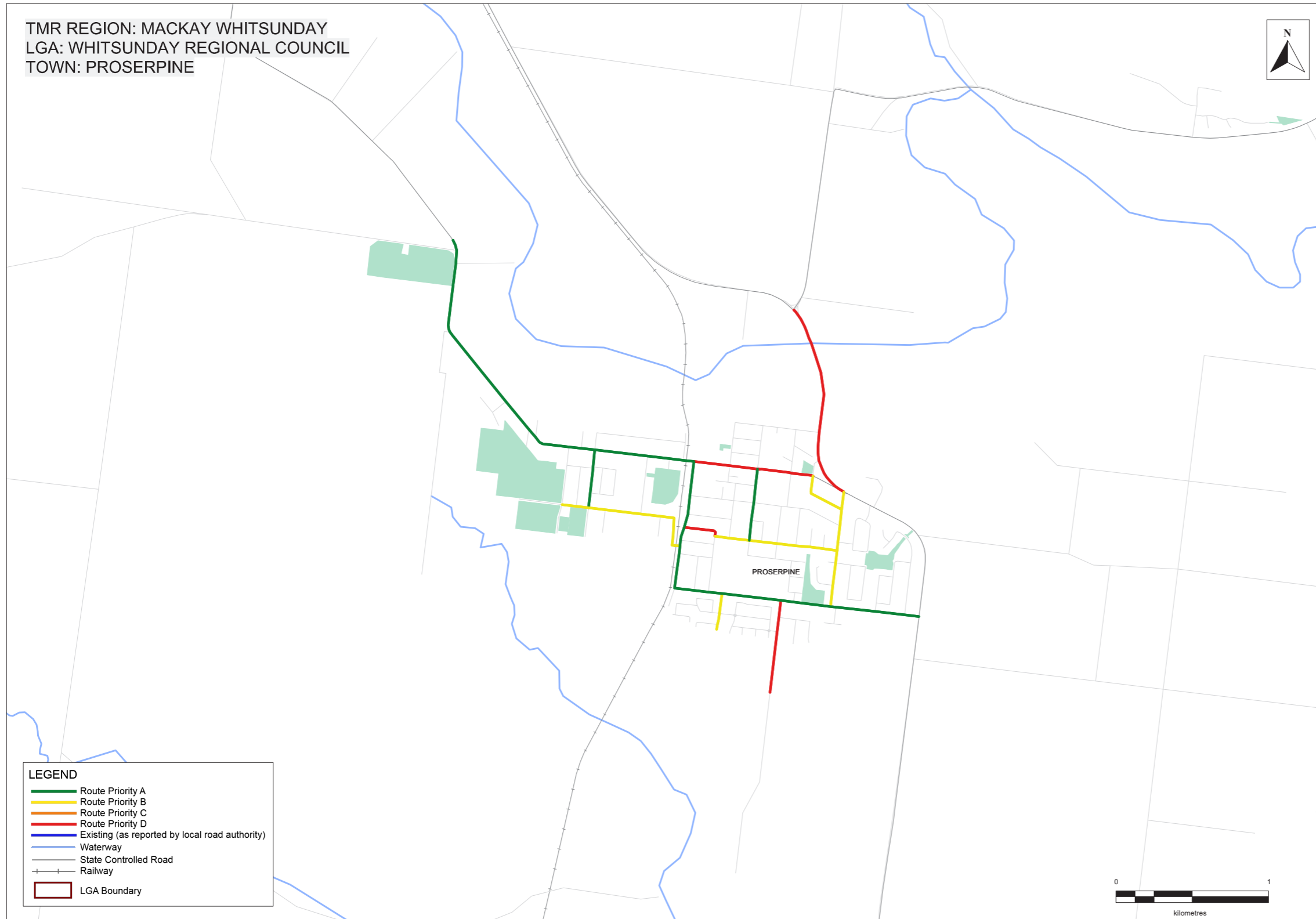
Whitsunday Regional Council – Proserpine

Priority Route Map 3

Mackay Isaac Whitsunday Principal Cycle Network

The routes shown are indicative and exist to guide further planning that will determine the precise routes and design of cycle facilities.

Disclaimer: While every care is taken to ensure the accuracy of this data, Transport and Main Roads and/or the State Government makes no representation or warranties about its accuracy, reliability, completeness or suitability for any particular purpose and disclaims all responsibility and all liability (including without limitation, liability in negligence) for all expenses, losses, damages (including indirect or consequential damage) and costs which you might incur as a result of the data being inaccurate or incomplete in any way and for any reason.



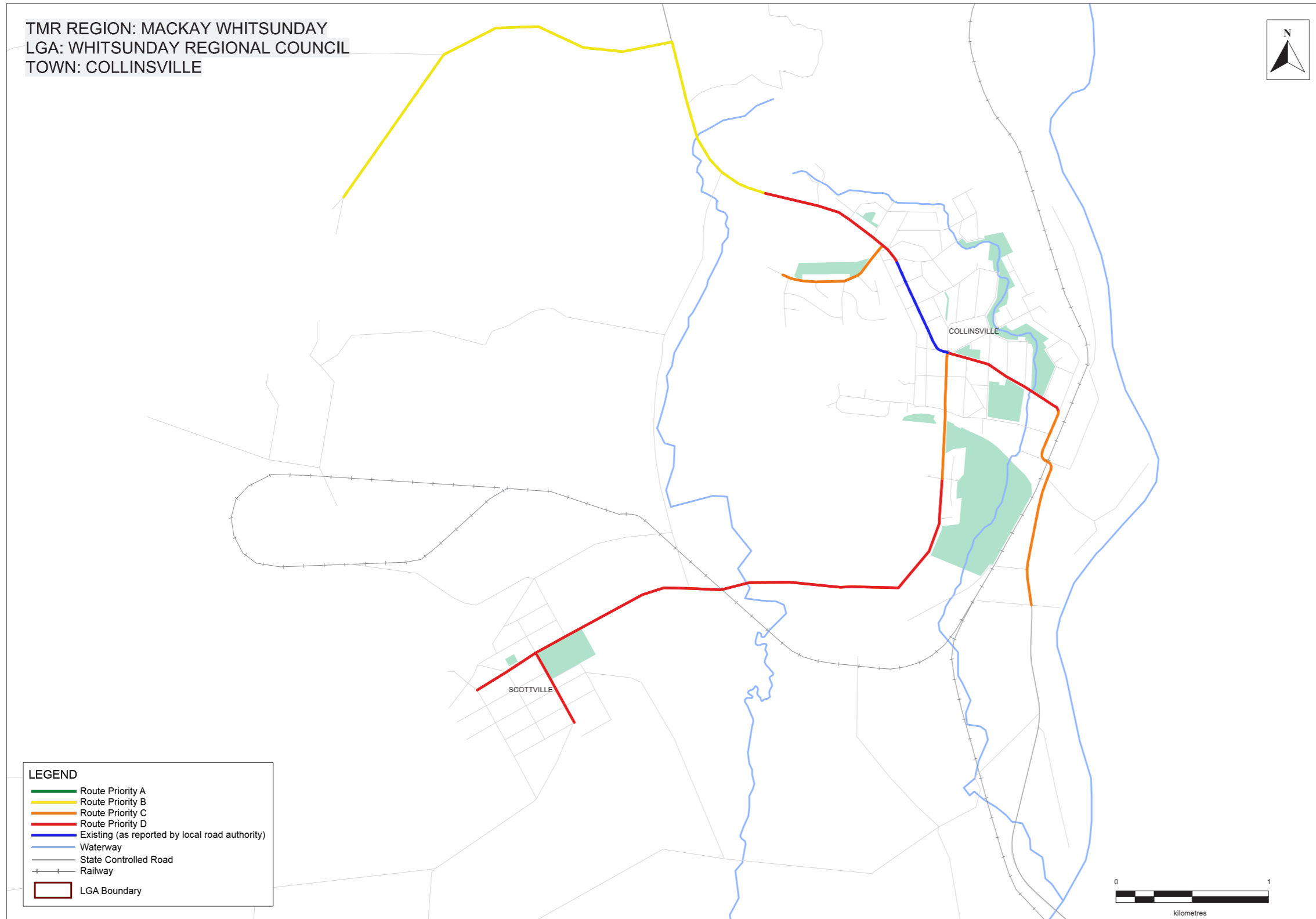
Whitsunday Regional Council – Collinsville

Priority Route Map 4

Mackay Isaac Whitsunday Principal Cycle Network

The routes shown are indicative and exist to guide further planning that will determine the precise routes and design of cycle facilities.

Disclaimer: While every care is taken to ensure the accuracy of this data, Transport and Main Roads and/or the State Government makes no representation or warranties about its accuracy, reliability, completeness or suitability for any particular purpose and disclaims all responsibility and all liability (including without limitation, liability in negligence) for all expenses, losses, damages (including indirect or consequential damage) and costs which you might incur as a result of the data being inaccurate or incomplete in any way and for any reason.



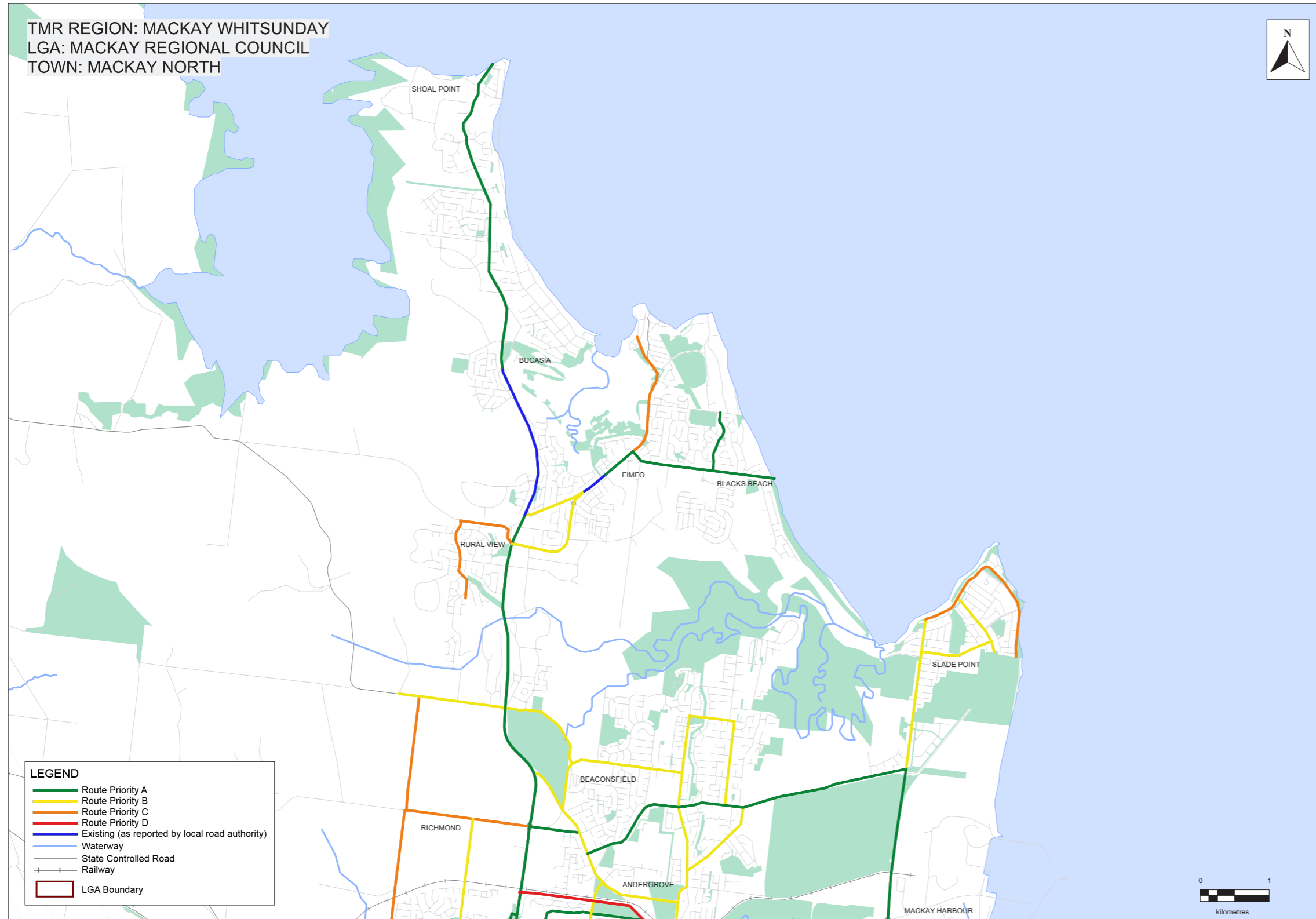
Mackay Regional Council – Mackay North

Priority Route Map 5

Mackay Isaac Whitsunday Principal Cycle Network

The routes shown are indicative and exist to guide further planning that will determine the precise routes and design of cycle facilities.

Disclaimer: While every care is taken to ensure the accuracy of this data, Transport and Main Roads and/or the State Government makes no representation or warranties about its accuracy, reliability, completeness or suitability for any particular purpose and disclaims all responsibility and all liability (including without limitation, liability in negligence) for all expenses, losses, damages (including indirect or consequential damage) and costs which you might incur as a result of the data being inaccurate or incomplete in any way and for any reason.



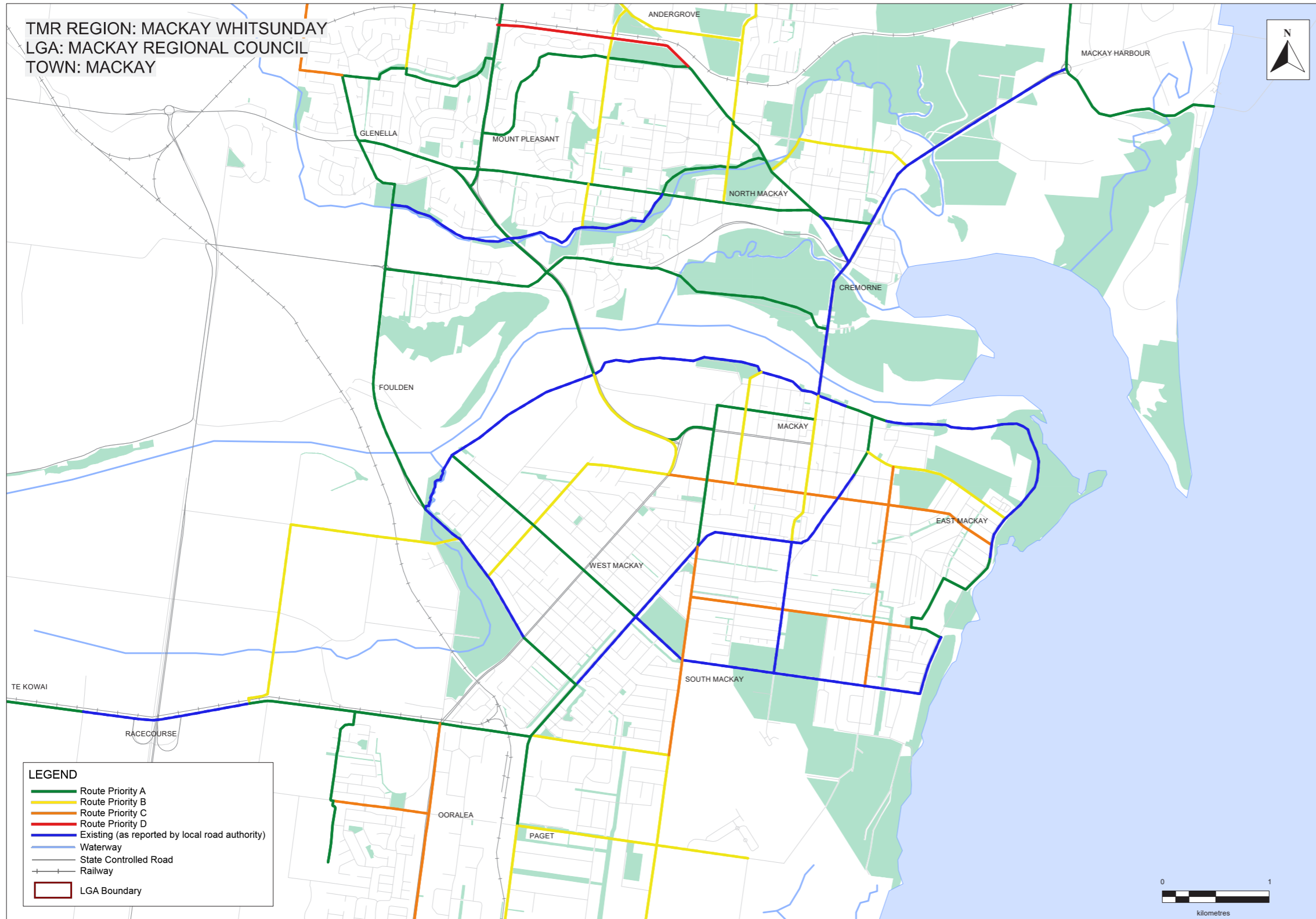
Mackay Regional Council – Mackay

Priority Route Map 6

Mackay Isaac Whitsunday Principal Cycle Network

The routes shown are indicative and exist to guide further planning that will determine the precise routes and design of cycle facilities.

Disclaimer: While every care is taken to ensure the accuracy of this data, Transport and Main Roads and/or the State Government makes no representation or warranties about its accuracy, reliability, completeness or suitability for any particular purpose and disclaims all responsibility and all liability (including without limitation, liability in negligence) for all expenses, losses, damages (including indirect or consequential damage) and costs which you might incur as a result of the data being inaccurate or incomplete in any way and for any reason.



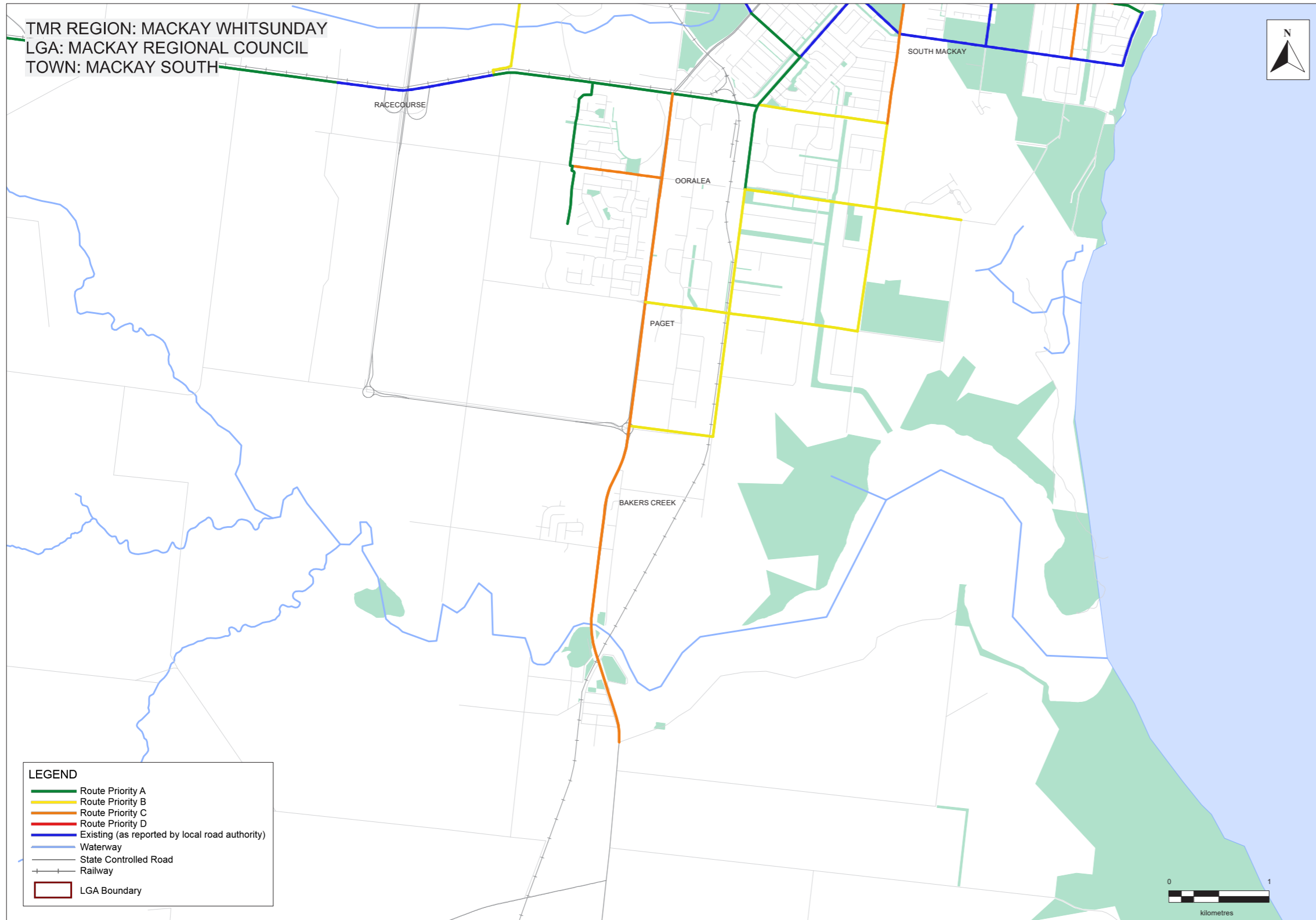
Mackay Regional Council – Mackay South

Priority Route Map 7

Mackay Isaac Whitsunday Principal Cycle Network

The routes shown are indicative and exist to guide further planning that will determine the precise routes and design of cycle facilities.

Disclaimer: While every care is taken to ensure the accuracy of this data, Transport and Main Roads and/or the State Government makes no representation or warranties about its accuracy, reliability, completeness or suitability for any particular purpose and disclaims all responsibility and all liability (including without limitation, liability in negligence) for all expenses, losses, damages (including indirect or consequential damage) and costs which you might incur as a result of the data being inaccurate or incomplete in any way and for any reason.

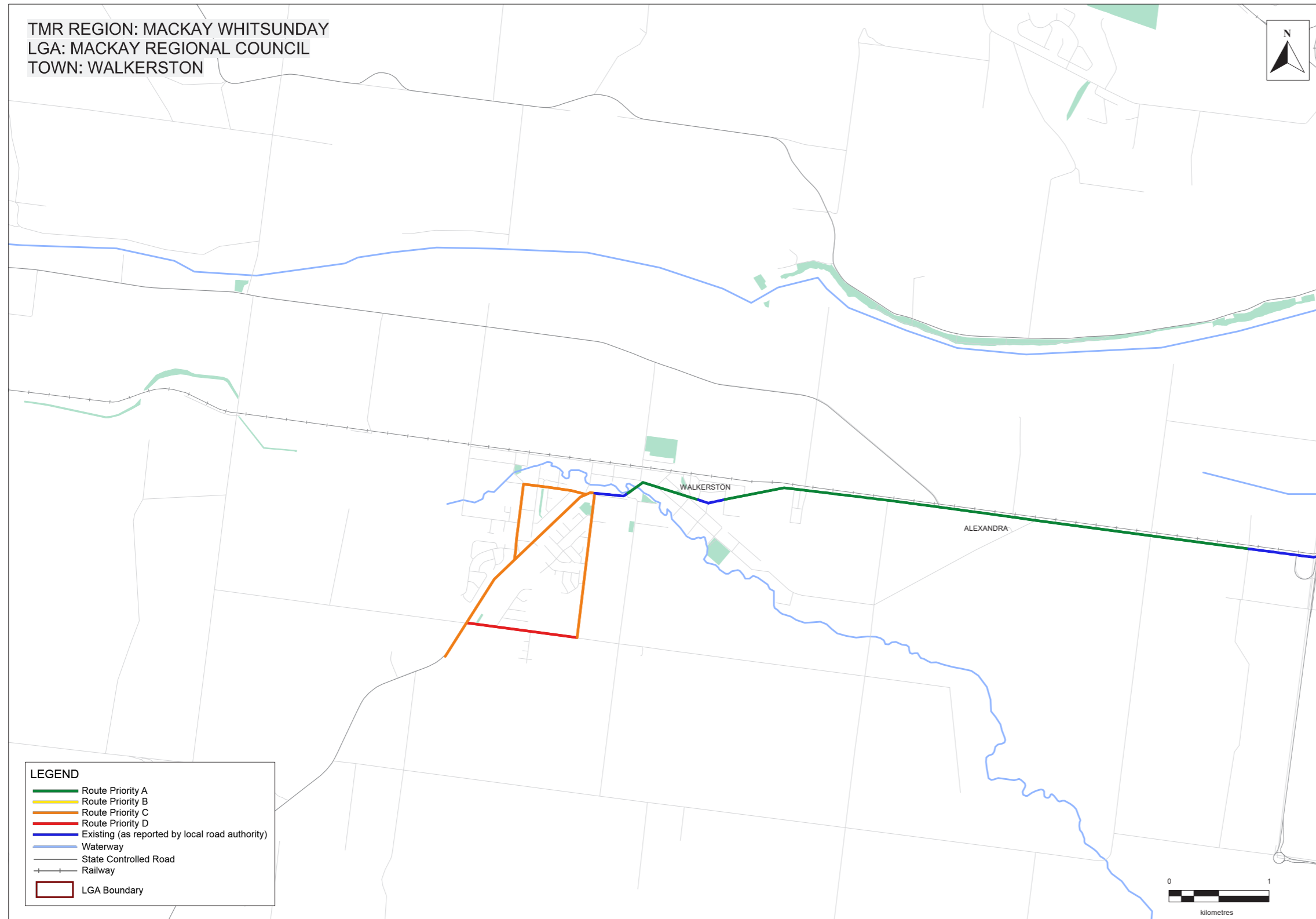


Priority Route Map 8

Mackay Isaac Whitsunday Principal Cycle Network

The routes shown are indicative and exist to guide further planning that will determine the precise routes and design of cycle facilities.

Disclaimer: While every care is taken to ensure the accuracy of this data, Transport and Main Roads and/or the State Government makes no representation or warranties about its accuracy, reliability, completeness or suitability for any particular purpose and disclaims all responsibility and all liability (including without limitation, liability in negligence) for all expenses, losses, damages (including indirect or consequential damage) and costs which you might incur as a result of the data being inaccurate or incomplete in any way and for any reason.



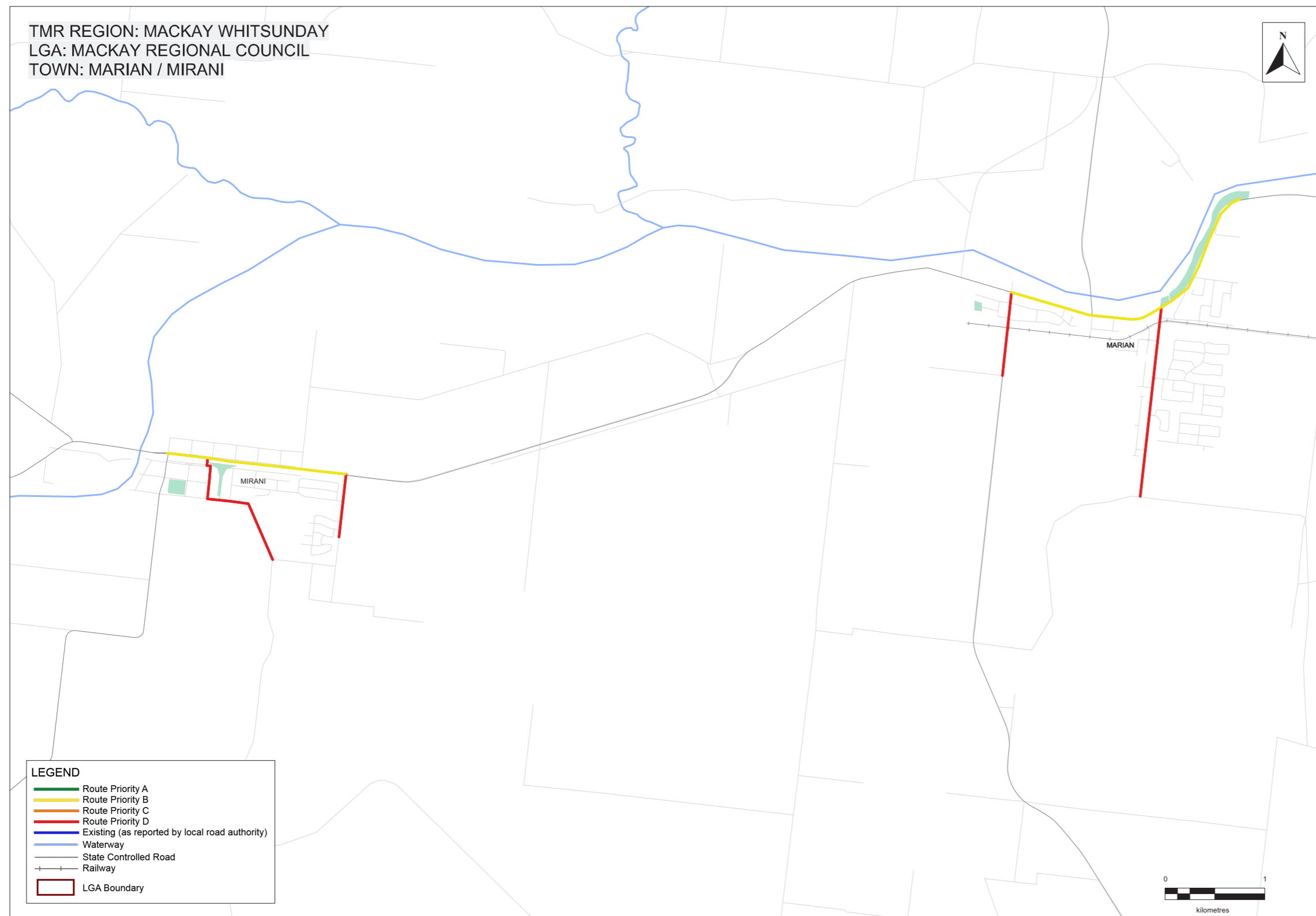
Mackay Regional Council – Marian/Mirani

Priority Route Map 9

Mackay Isaac Whitsunday Principal Cycle Network

The routes shown are indicative and exist to guide further planning that will determine the precise routes and design of cycle facilities.

Disclaimer: While every care is taken to ensure the accuracy of this data, Transport and Main Roads and/or the State Government makes no representation or warranties about its accuracy, reliability, completeness or suitability for any particular purpose and disclaims all responsibility and all liability (including without limitation, liability in negligence) for all expenses, losses, damages (including indirect or consequential damage) and costs which you might incur as a result of the data being inaccurate or incomplete in any way and for any reason.

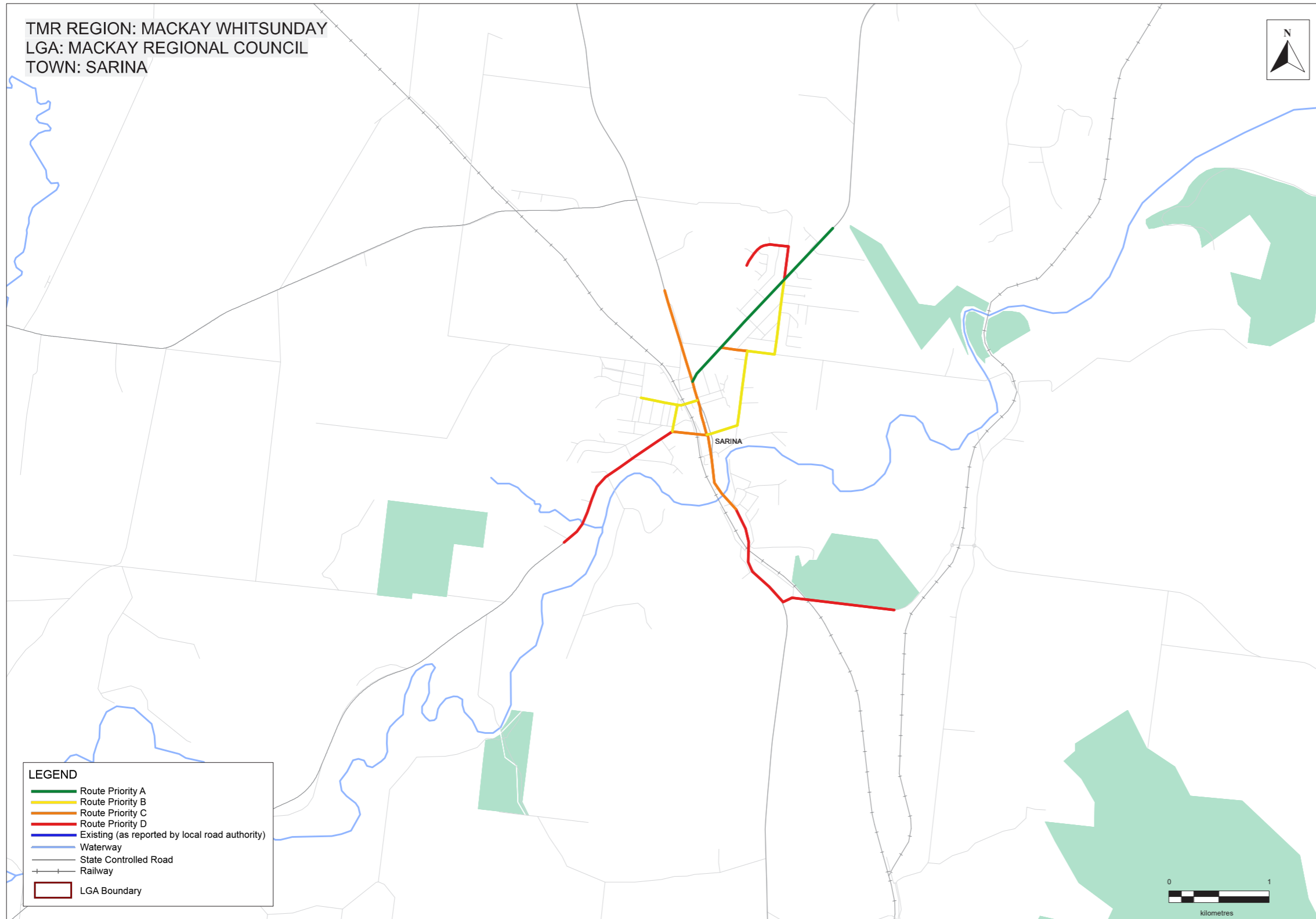


Priority Route Map 10

Mackay Isaac Whitsunday Principal Cycle Network

The routes shown are indicative and exist to guide further planning that will determine the precise routes and design of cycle facilities.

Disclaimer: While every care is taken to ensure the accuracy of this data, Transport and Main Roads and/or the State Government makes no representation or warranties about its accuracy, reliability, completeness or suitability for any particular purpose and disclaims all responsibility and all liability (including without limitation, liability in negligence) for all expenses, losses, damages (including indirect or consequential damage) and costs which you might incur as a result of the data being inaccurate or incomplete in any way and for any reason.



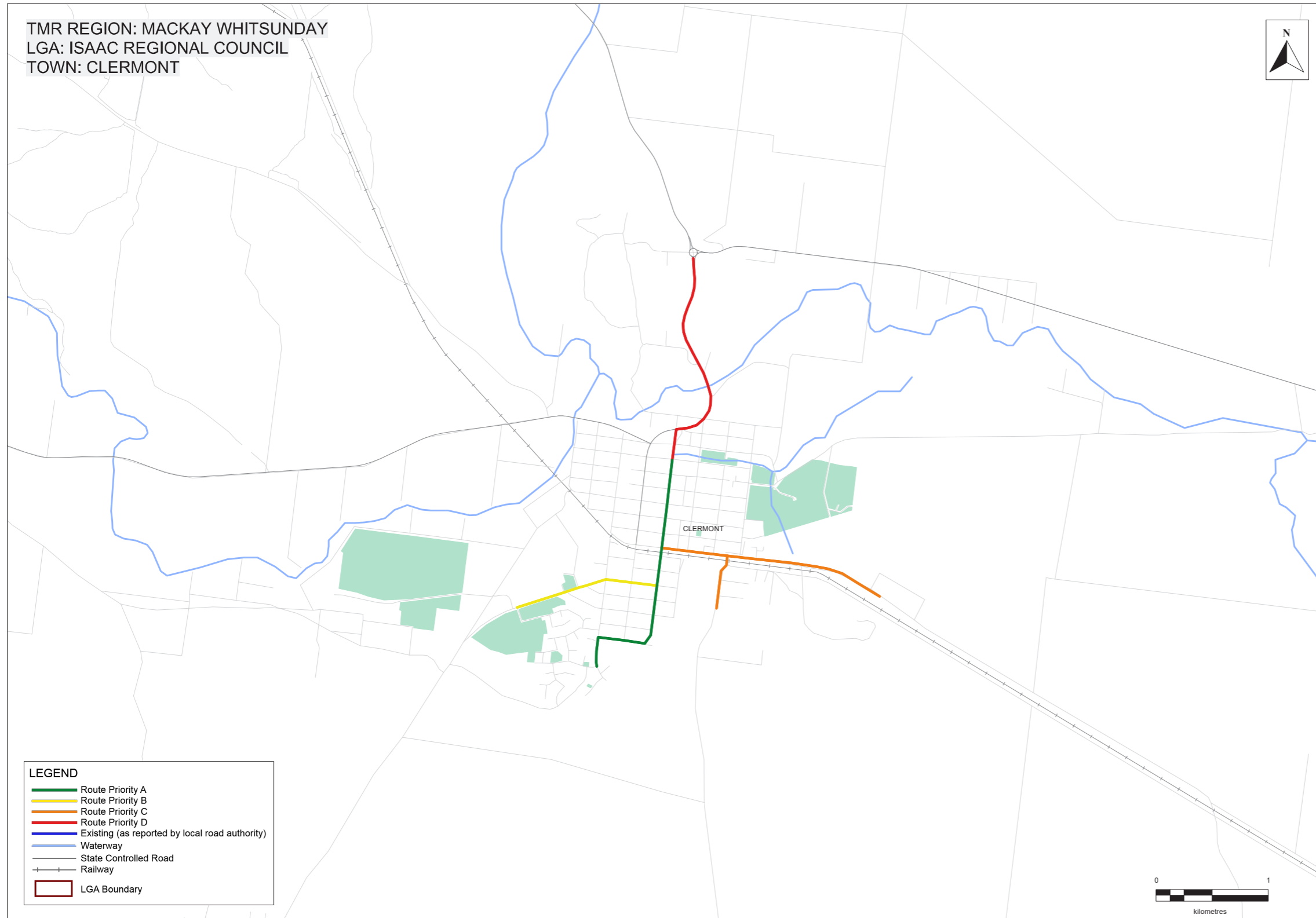
Isaac Regional Council – Clermont

Priority Route Map 11

Mackay Isaac Whitsunday Principal Cycle Network

The routes shown are indicative and exist to guide further planning that will determine the precise routes and design of cycle facilities.

Disclaimer: While every care is taken to ensure the accuracy of this data, Transport and Main Roads and/or the State Government makes no representation or warranties about its accuracy, reliability, completeness or suitability for any particular purpose and disclaims all responsibility and all liability (including without limitation, liability in negligence) for all expenses, losses, damages (including indirect or consequential damage) and costs which you might incur as a result of the data being inaccurate or incomplete in any way and for any reason.

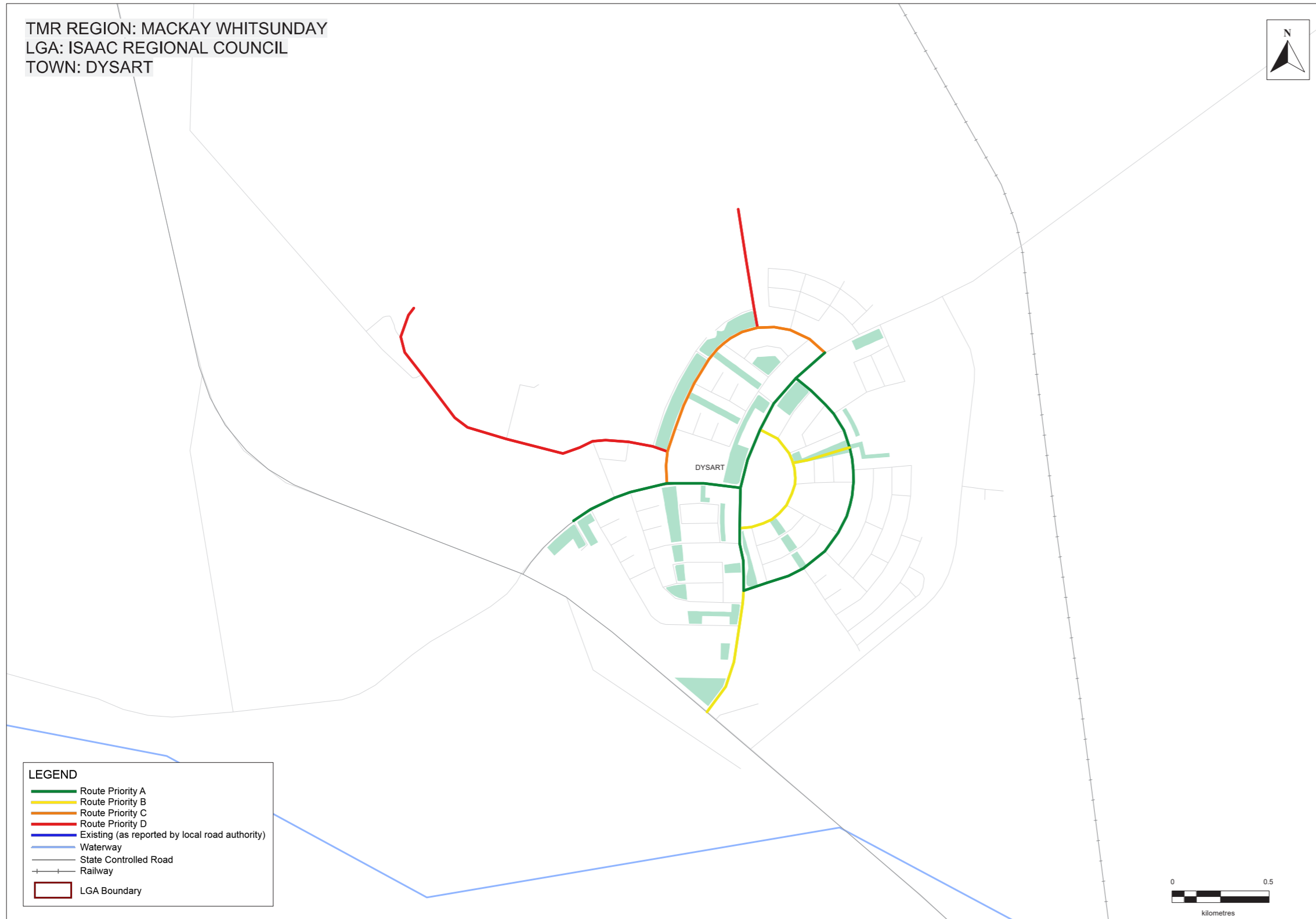


Priority Route Map 12

Mackay Isaac Whitsunday Principal Cycle Network

The routes shown are indicative and exist to guide further planning that will determine the precise routes and design of cycle facilities.

Disclaimer: While every care is taken to ensure the accuracy of this data, Transport and Main Roads and/or the State Government makes no representation or warranties about its accuracy, reliability, completeness or suitability for any particular purpose and disclaims all responsibility and all liability (including without limitation, liability in negligence) for all expenses, losses, damages (including indirect or consequential damage) and costs which you might incur as a result of the data being inaccurate or incomplete in any way and for any reason.



Isaac Regional Council – Middlemount

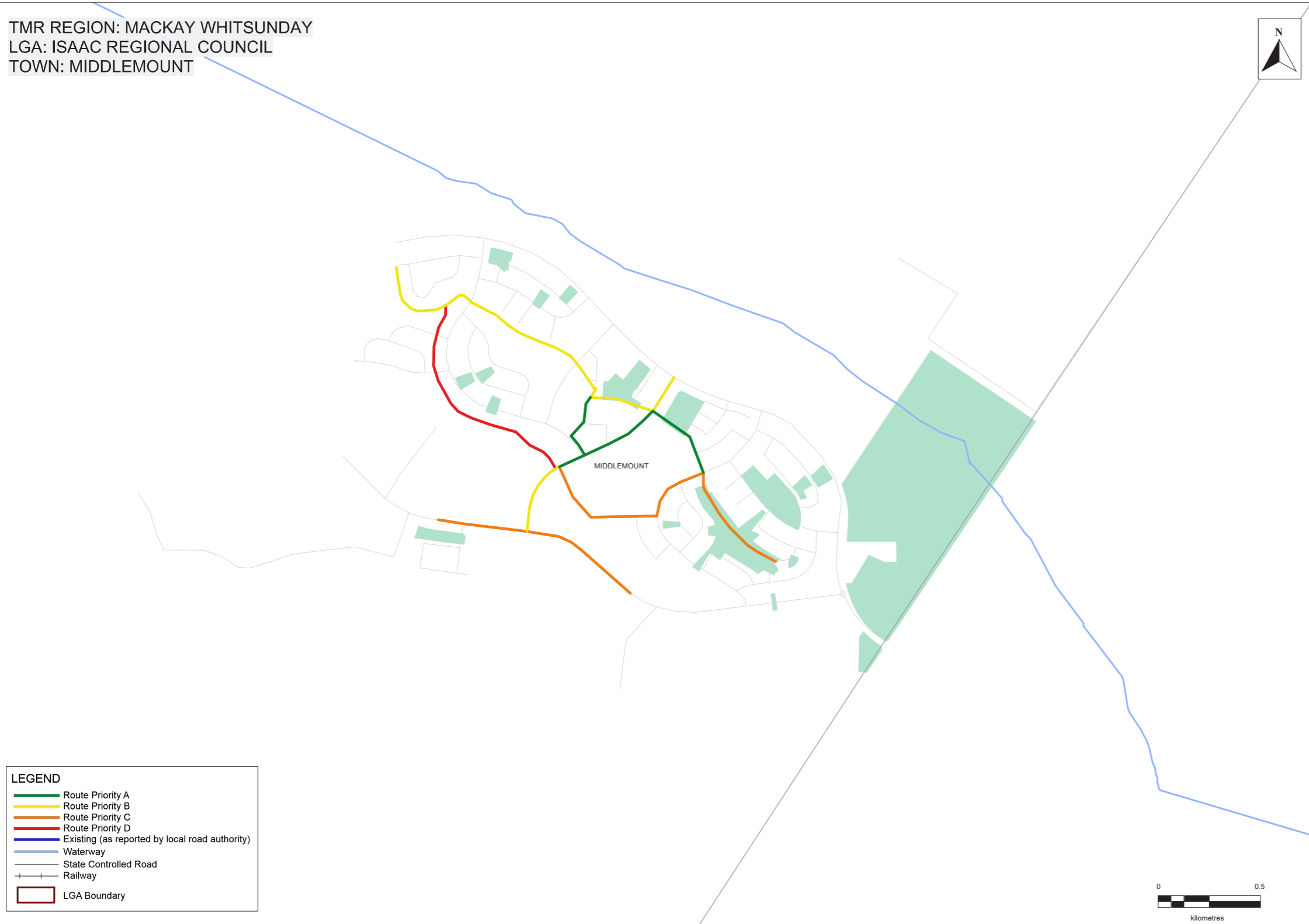
Priority Route Map 13

Mackay Isaac Whitsunday Principal Cycle Network

The routes shown are indicative and exist to guide further planning that will determine the precise routes and design of cycle facilities.

Disclaimer: While every care is taken to ensure the accuracy of this data, Transport and Main Roads and/or the State Government makes no representation or warranties about its accuracy, reliability, completeness or suitability for any particular purpose and disclaims all responsibility and all liability (including without limitation, liability in negligence) for all expenses, losses, damages (including indirect or consequential damage) and costs which you might incur as a result of the data being inaccurate or incomplete in any way and for any reason.

TMR REGION: MACKAY WHITSUNDAY
LGA: ISAAC REGIONAL COUNCIL
TOWN: MIDDLEMOUNT



Priority Route Map 14

Mackay Isaac Whitsunday Principal Cycle Network

The routes shown are indicative and exist to guide further planning that will determine the precise routes and design of cycle facilities.

Disclaimer: While every care is taken to ensure the accuracy of this data, Transport and Main Roads and/or the State Government makes no representation or warranties about its accuracy, reliability, completeness or suitability for any particular purpose and disclaims all responsibility and all liability (including without limitation, liability in negligence) for all expenses, losses, damages (including indirect or consequential damage) and costs which you might incur as a result of the data being inaccurate or incomplete in any way and for any reason.

